

## USER MANUAL FOR DATA ACQUISITION SYSTEM

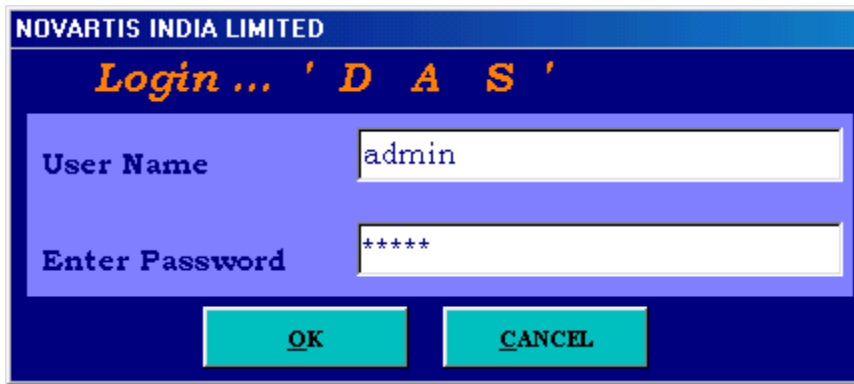
This is 8 Channel Data Acquisition software, which will gives following functionalities

- 1) Live data display
- 2) Store data from data logger to computer
- 3) Graphical display
- 4) Reports
- 5) History reports
- 6) Multi-user support
- 7) Data compression and restore with password support
- 8) Sending automatic mail while downloading

### How to install this software

- 1) Put cd in the cd rom this automatically start copying files other wise run setup.exe file
- 2) If any file over write error occur, over write the file
- 3) If any area violation error occur, press ignore
- 4) Do not change the path while installing software
- 5) Once installation is over this software can be access from start ->program menu

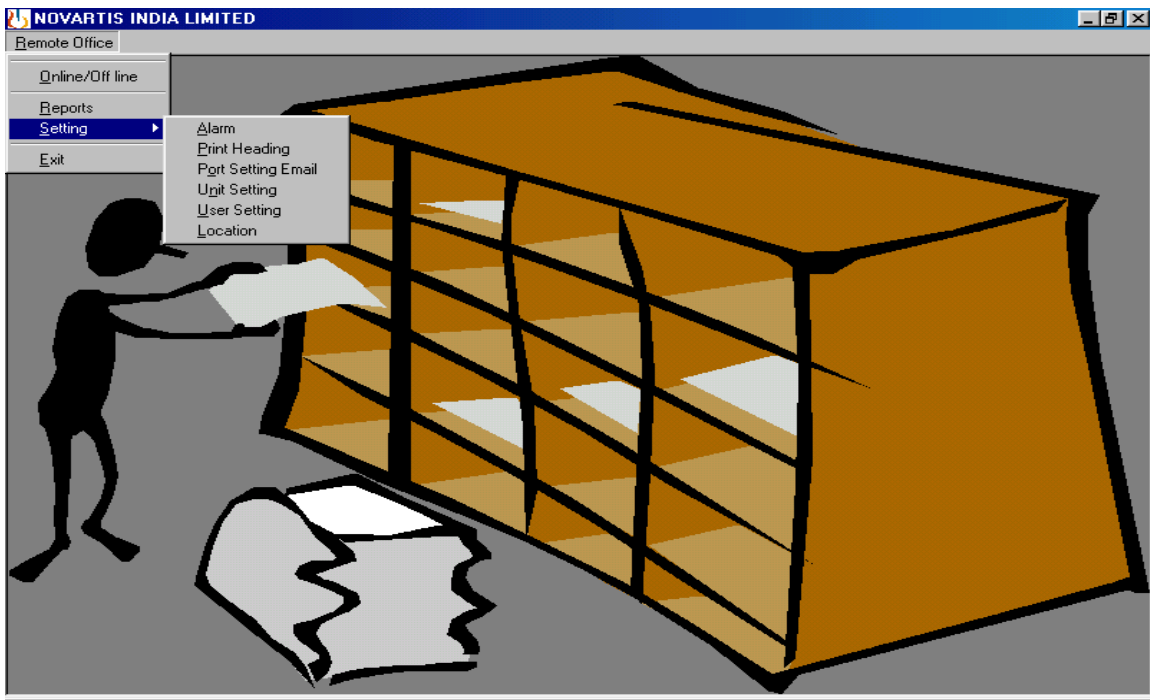
First screen of the software is Login & password



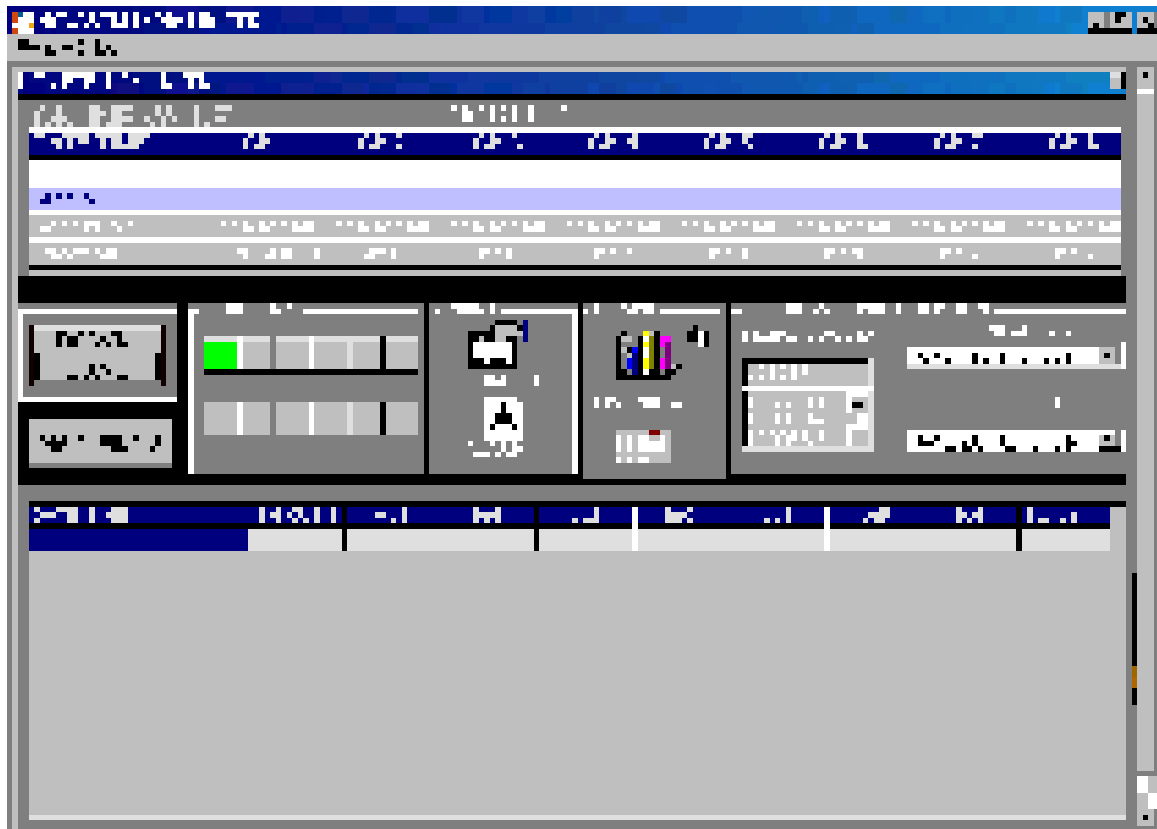
The login screen features a dark blue header with the text "NOVARTIS INDIA LIMITED" in white. Below the header, the text "Login ... ' D A S '" is displayed in a stylized orange font. The main area has a light blue background with two white input fields. The first field is labeled "User Name" and contains the text "admin". The second field is labeled "Enter Password" and contains six asterisks "\*\*\*\*\*". At the bottom, there are two cyan buttons: "OK" and "CANCEL".

if you are using the software first time location set menu will come other wise main menu will come

If your user name and password is correct this goes in to main menu



After Main menu ,Online menu will comes on the screen automatically



Top part of screen indicate live value from data logger along with sensor no, location name, status (high, low, normal)

Other buttons are

Down load:- Click on this will download all values from logger to data base, if logger not responding it ask you for retry option



Print Frame :- first option is print stored value on the printer and view on the screen

Alarm:- To Check the alarm status of previous stored values and write comment on that

Graph:- To print Graph of stored value

List view: To view stored value of data logger

Date Start & Date End :- Range date for printing ,list view, alarm .You are supposed to set the start date end date for taking print out and other operations

Main Menu :- Go back to main menu for setting operation (with out going back to main you can't do modification)

## ALARM SETTING



Load alarm will load values from data logger to software

Any modification on Channel (tagname,sensor no,location...)

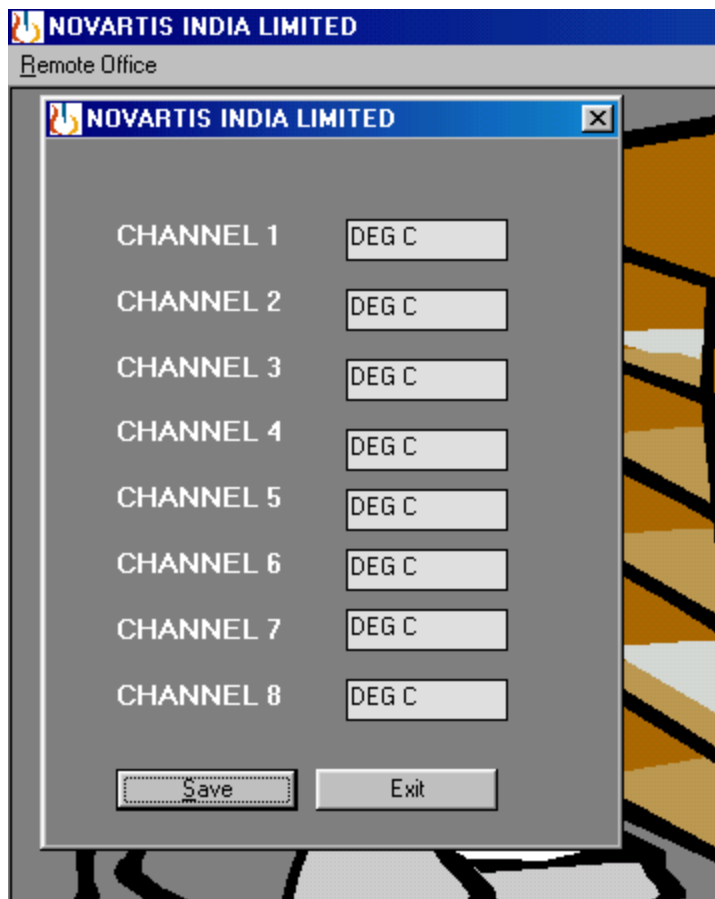
Click on channel no: this will show previous values stored on the database ,now you can modify the values and click on modify to store the permanently



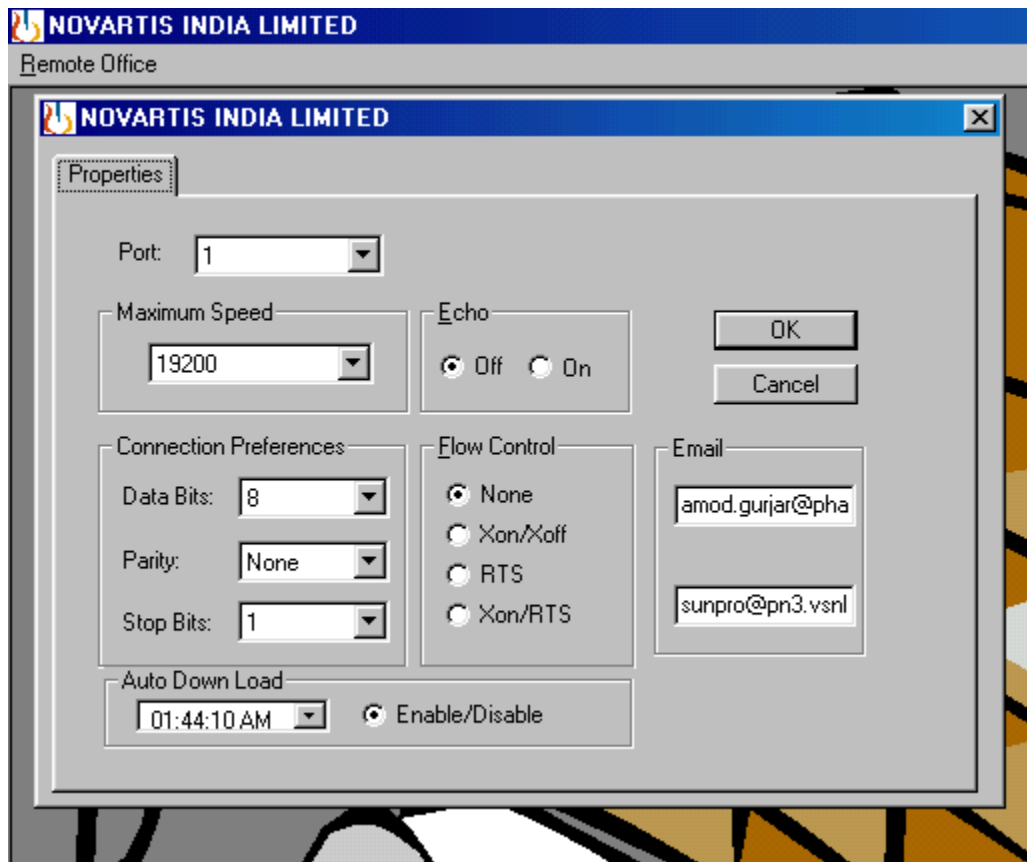
There are 2 Heading line on the report which user can change

Header-1: at the top

Header-2,Header-3 : - Both comes in the second line



Unit Can be set With this menu Which will come in report & live display



This very important for Your Mail ,this provide you 2 mail address , through which your mail will go to Head office.

Other are port selection (com1 or com2....) depending on which port you are connected the logger

Auto download:-setting time for auto downloading values provided system should on



NOVARTIS INDIA LIMITED

**' D A S '**

User Name

Enter Password

New logger Can be created of old user can be deleted from this menu  
using new user, delete user,

NOVARTIS INDIA LIMITED

**' D A S '**

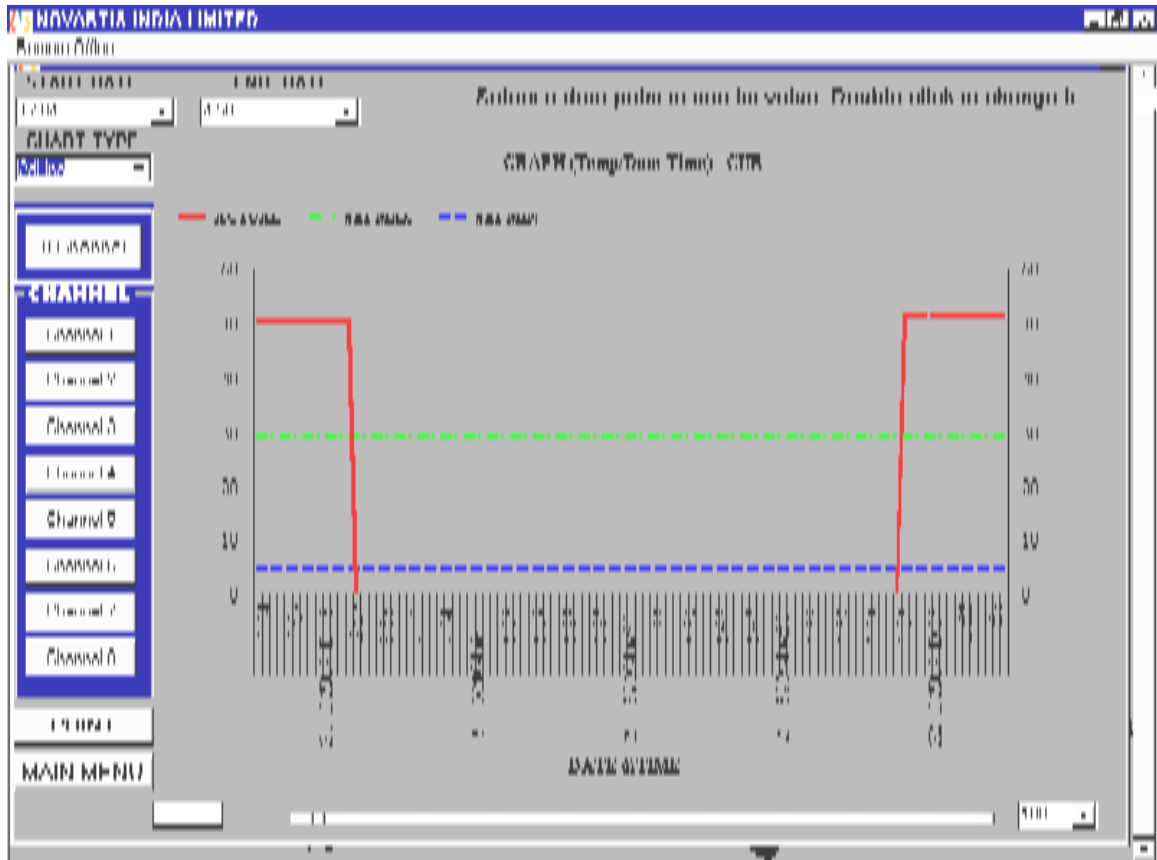
User Name

Enter Password

List of Users

- admin
- biju
- HEAD
- 1

Close



Graph will look like this here you can select different channel or 8 channel Date selection ,print on the printer scroll bar to scroll the graph

From Report menu You can take

- 1) Date range normal report
- 2) Alarm Report (High ,Low, Normal)
- 3) Send Email to central office(History)(before sending email data can be view using mail view option

Your print Look like This

[illegible]

Click on the printer(icon) to print on the printer